



International Summer Academy Zurich
22 July – 05 August 2012

WELCOME TO GLATT!

One of the greatest challenges in our current architectural environment is the need to think and act on a large scale, and it is here where the work of the D-ARCH, the Department of Architecture at the ETH Zurich, is focused. In addition to an architecture that never loses sight of its social, geographical, cultural, economic and ecological context, the core of the teaching and research work at the D-ARCH deals with the global discourse on urbanisation and its affected territories.

Needed are visions which deal with the issue of how a growing population and the corresponding need for housing can be harmonised with a proper use of habitable land and other resources. We orientate ourselves internationally, but are also deeply committed to the concerns of this country. These global concerns can also be applied to the local and regional challenges in Switzerland. Here, too, we are searching for concepts and visions that can answer questions about the current development of Swiss landscapes and cities: How can growth be directed?

The vision "Glatt – die Stadt" ("Glatt – the City") , is presented by the Architects Group Krokodil as a possible way of increasing the density of the region between Zurich Kloten Airport and Uster. It is an attempt to give a concrete answer to the questions raised above. The International Summer Academy Zurich, jointly organised by the Architects Group Krokodil and the D-ARCH, offers participants a forum in which they can evaluate, question and build on the presented proposals and fundamental considerations.

The D-ARCH cordially welcomes all participants and guests and wishes an instructive time during the International Summer Academy Zurich.

D-ARCH, ETH Zurich

CREATING CITIES, PRESERVING LANDSCAPES

We, the Architects Group Krokodil, consist of a number of architects' offices in Zurich. Since 2008 and without commission, we have formed planning groups, organised workshops with experts and sought to engage in dialogue with politicians, associations and various initiative groups. Our goal is to reconsider the growth of suburban areas in a way that is directed and of a high urban quality, thereby suggesting concrete solutions to agglomerations in Switzerland.

After lengthy preliminary studies we have selected the Glatttal in the Canton of Zurich. This project is motivated primarily by a desire to consciously shape our urban landscape, rather than letting interplaying forces determine developments. As architects and landscape architects we believe that it is our duty to develop a basis on which a desirable city of the future can be shaped.

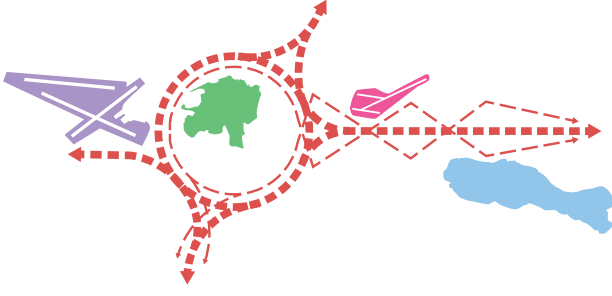
Our vision differs from other urban visions formulated in recent years in one critical point: We propose a new city that develops through a focused transformation of built suburbia, a city that establishes clear boundaries to the landscape, a city that uses increased density to hinder any further sprawl and is committed to preserving the landscape.

The Architects Group Krokodil looks forward to exciting weeks that will hopefully be marked by an emergence of new standpoints, lively discussions, fascinating lectures, new friendships and a stimulating exchange of ideas.

Architects Group Krokodil

FROM SUBURB TO CITY

The Architects Group Krokodil postulates that Glatttal should be read not as a peripheral metropolitan region made up of individual communities but as an emerging urban body. This reading produces a proposal for even more intensive access systems and a significant increase in density. The core message of "Glatt – die Stadt" ("Glatt – the City") is a plea to preserve difference: "City



ACADEMIC PROGRAM

For two weeks around 100 students and 30 lecturers from 30 different countries will devote themselves in 10 Design Studios to the theme of the city/agglomeration/landscape. The vision "Glatt – die Stadt" ("Glatt – the City") by the Architects Group Krokodil provides the conceptual basis. Within designated "Intervention areas" an examination is made of the various factors that can contribute to the development of a city of real quality. How does a city arise? What is the relationship between old and new? What defines a city? How can identity be created? What role does the architectural project play? The event will be accompanied by a broad range of public lectures and discussions involving architects, planners and economists.

DESIGN STUDIOS

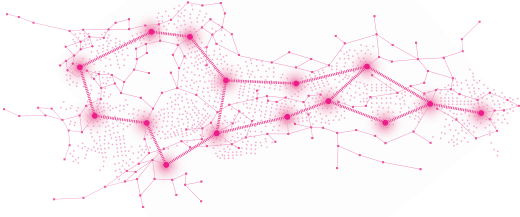
- A: ARNO BRANDLHUBER
CHRISTOPHER ROTH
SAM CHERMAYEFF
B: DON MURPHY
C: BOSTJAN VUGA
D: ALFREDO BRILLEMBOURG & HUBERT KLUMPNER
E: ANNE-JULCHEN BERNHARDT & JÖRG LEESER
F: KUNLÉ ADEYEMI
G: MARK LEE
H: DAVID TROTTIN
I: MARTIN REIN-CANO
J: CHRISTOPHE GIROT & LUKAS SCHWEINGRUBER

SPEAKERS

- FREEK PERSYN
EMANUEL CHRIST
CHRISTOPH GANTENBEIN
ANGELUS EISINGER
ALEXANDRE CHEMETOFF
MARCEL MEILI
ROGER DIENER
MARTIN HELLER
MARC ANGÉLIL
ANDREAS RUBY
ANDRÉ BIDEAU
ULRICH GÖRLICH
MERET WANDELER
JAN EDLER
BART LOOTSMA

CURATORS

- ARCHITECTS GROUP KROKODIL:
ROGER BOLTSHAUSER
DANIEL NIGGLI
MATHIAS MÜLLER
FABIAN HÖRMANN
ANDREAS SONDEREGGER
MISCHA SPOERRI
RAPHAEL FREI
LUKAS SCHWEINGRUBER
FRANK ZIERAU



MONDAY 23 JULY

GLATTAL 6 x 15

Various Swiss universities have undertaken a critical examination of the vision "Glatt – die Stadt" ("Glatt – the City") and have developed their own projects in the Glatttal. These projects will be presented in the form of 6 short lectures, each lasting 15 minutes.

Presentations

- 6.30 pm
HSLU Luzern
BFH Bern Burgdorf
FHNW Murttenz
ZHAW Winterthur (2x)
HSR Rapperswil

TUESDAY 24 JULY

CITY BUILDING BLOCKS

How can we radically densify our core cities, thereby creating a clear-cut distinction to the agglomeration? Put another way, how can we conceive our core cities as radically larger?

Lectures

- 6.30 pm
FREEK PERSYN
Brussels

7.15 pm
EMANUEL CHRIST,
CHRISTOPH
GANTENBEIN
Basel

WEDNESDAY 25 JULY

INCREMENTAL URBANISM

At a time when territory is occupied in an increasingly hypertrophic way, the all-embracing master plan appears increasingly restricted. What are potential hybrid strategies between "top-down" and "bottom-up" planning?

Panel

- 6.30 pm
Moderation
ANGELUS EISINGER
Zurich/ Hamburg
Lectures
ALEXANDRE
CHEMETOFF
Paris
MARCEL MEILI
Zurich
Discussion
ROGER DIENER
Basel
MARTIN HELLER
Zurich

THURSDAY 26 JULY

URBAN LANDSCAPES

The classic dichotomy between town and country is a thing of the past. A result of this is our changing perception of the role of landscape architecture as an urban planning discipline. What can landscape architecture teach us about the city?

Lectures

- 6.30 pm
MARC ANGÉLIL
Zurich / Los Angeles

7.15 pm
CHRISTOPHE GIROT
Zurich

8.00 pm
MARTIN REIN-CANO
Berlin

FRIDAY 27 JULY

DESIGN STUDIOS

No public program.

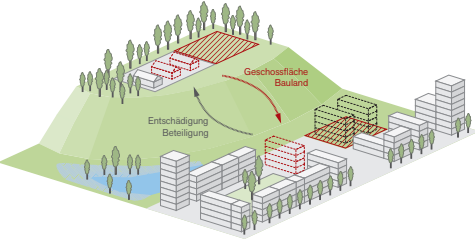
SATURDAY 28 JULY

INTERIM REVIEWS

All Design Studios present and discuss the results of the first week.

Interim reviews

9.00 am
DESIGN STUDIOS



MONDAY 30 JULY

ARCHIPELAGO, COL-LAGE CITY...

Can the term "Zwischenstadt" ever be anything more than an euphemistic expression? How could a new type of city arise? What is the relationship between theoretical approaches and actual current developments in urban planning?

Lectures

- 6.30 pm
ANDREAS RUBY
Berlin

7.15 pm
ANDRÉ BIDEAU
Zurich

8.00 pm
MARK LEE
Los Angeles

TUESDAY 31 JULY

INFORMAL URBANISM

Despite years of planning efforts, the actual state of spatial planning in Switzerland is sobering. What is in fact formal appears informal. Conversely, in Caracas or Lagos the informal leads to apparently formal morphological structures. What can we learn from this?

Lunch Lecture

- 12.00 pm
ULRICH GÖRLICH,
MERET WANDELER
Zurich

Lecture

- 6.30 pm
ALFREDO BRILLEMBOURG,
HUBERT KLUMPNER
Caracas / São Paulo / New York / Zurich
KUNLÉ ADEYEMI
Lagos/ Amsterdam

WEDNESDAY 01 AUGUST

Which cultural similarities and differences can be noted within the European discourse? What brings these about? Do we wish to level out, or to sharpen these similarities and differences?

Lectures

- 6.30 pm
ANNE-JULCHEN
BERNHARDT,
JÖRG LEESER
Cologne

- 7.15 pm
BOSTJAN VUGA
Ljubljana

- 8.00 pm
DON MURPHY
Amsterdam

THURSDAY 02 AUGUST

HARDWARE VS. SOFTWARE

'City' is not just figure and ground. It is only through infinitely diverse everyday activities that an otherwise abstract spatial vessel becomes a city. Space and content thus stand in a precarious (political) relationship to one another. How can this field of tension be made productive?

Lectures

- 6.30 pm
JAN EDLER
Berlin
Presenting partner:
ZUMTOBEL LICHT AG

- 7.15 pm
DAVID TROTTIN
Paris

- 8.00 pm
ARNO BRANDLHUBER,
CHRISTOPHER ROTH,
SAM CHERMAYEFF
Berlin

FRIDAY 03 AUGUST

DESIGN STUDIOS

No public program.

SATURDAY 04 AUGUST

FINAL REVIEWS

Lecturers and external guests will discuss the projects of the Design Studios publicly. Afterwards Bart Lootsma will comment on the results of the International Summer Academy Zurich.

Final reviews

9.00 am
DESIGN STUDIOS

Comment

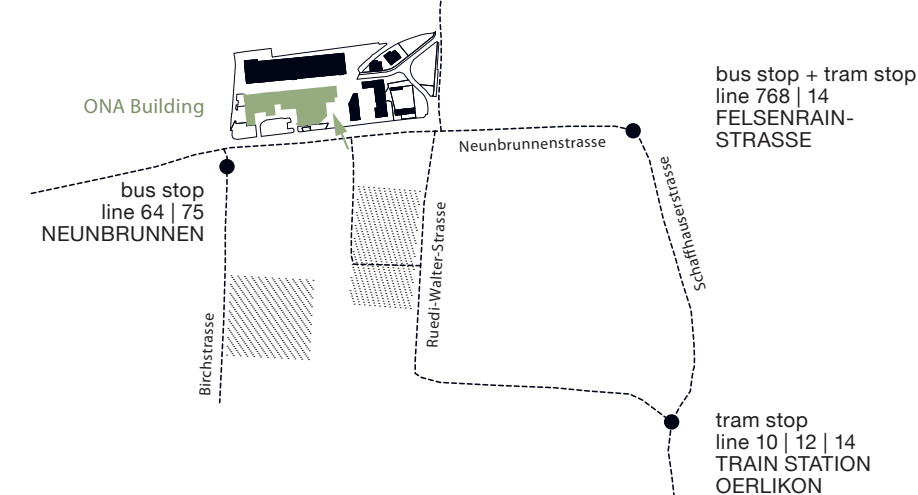
- 4.00 pm
MARKUS SCHAEFER
Zurich

Farewell

- 5.00 pm
Apéro and
Farewell-party

LOCATION

ONA Building
ETH Zurich
Neunbrunnstrasse
50
8050 Zurich Oerlikon



SUPPORTED BY:



ORGANISED BY:





FREEK PERSYN
51N4E
Brussels

Not long after graduating from the Sint-Lucas School of Architecture in Brussels, Freek Persyn jointly founded the practice of 51N4E with Peter Swinnen and Johan Anrys. Until 2003, one year before 51N4E was awarded the Rotterdam Maaskant Award for Young Architects, he also freelanced for Xaveer de Geyter Architects. Parallel to running his studio, Persyn has been involved in the academic field as assistant professor at the Faculty of Architecture at the University of Gent, as visiting critic and studio master at the Berlage Institute in Rotterdam, and currently as visiting professor at the Academy of Architecture in Mendrisio, Switzerland. He also regularly acts as lecturer and jury member.



MARCEL MEILI
Meili, Peter Architekten
Zurich

Marcel Meili, born in 1953, formed Meili, Peter Architekten together with Markus Peter in 1987. Their recent built work includes the RiffRaff cinema in Zurich, the Zurich Central Station extension, the Swiss Re Center for Global Dialogue in Rüschlikon, and the Hyatt Hotel in Zurich. Marcel Meili was a lecturer at the “Internationale Sommerakademie Berlin” in 1987, and has taught as visiting professor at the Harvard Graduate School of Design. Since 1999 he has been teaching as a professor at the ETH Zurich where – together with Jacques Herzog, Pierre de Meuron, Roger Diener, and Christian Schmid – he founded and runs ETH Studio Basel: Contemporary City Institute.



CHRISTOPHE GIROT
Atelier Girot
Zurich

Christophe Girot, born in 1957, graduated with an M.Arch M.L. Arch from Berkeley. He is full professor at the Chair of Landscape Architecture at the Department of Architecture of the ETH Zurich, where he has been head of the Institute of Landscape Architecture since 2001. His research addresses three fundamental themes: New topological methods in landscape design, new media in landscape analysis and perception, recent history and theory of landscape design. His professional practice at Atelier Girot focuses on large-scale landscape design. He is currently Principal Investigator at the ETH Future Cities Laboratory in Singapore (SEC) heading research in Jakarta on the topic of Landscape and Ecology.



MARK LEE
Johnston Marklee & Associates
Los Angeles

Mark Lee is the principal of Johnston Marklee & Associates. The Los Angeles-based firm has been engaged in a range of commissions in the US, Europe and South America since 1998 and has received several awards. Combining his academic and design expertise, Mark Lee conducts speculative research based on critical reassessments of architectural and urban design history and has written and lectured widely on his research. Mark Lee has taught at the ETH Zurich, the Technical University of Berlin, and at the University of California in Los Angeles, where he served as Vice Chair of the Department of Architecture and Urban Design.



ANNE-JULCHEN BERNHARDT, JÖRG LEESER
Bel. Associates
Cologne

Anne-Julchen Bernhardt, born in 1971, worked as an architect in Berlin and Cologne and as assistant professor at RWTH Aachen University. Since 2008 she has been tenured professor for building typologies at RWTH Aachen University. Jörg Leeser, born in 1967, worked as an architect in New York and Cologne, as assistant professor in New York and at RWTH Aachen University. Since 2007 he has been teaching as a professor at the Bergische University Wuppertal and presently at the Peter Behrens School of Architecture, University of Applied Sciences in Düsseldorf. In 2000 they established Bel. Associates, and have received numerous awards. The office has worked on 95 projects, of which 15 have been completed.



SAM CHERMAYEFF, CHRISTOPHER ROTH, ARNO BRANDLHUBER
Berlin

Arno Brandlhuber is the founder of brandlhuber+ Berlin. He holds the Chair of Architecture and Urban Research at the Academy of Fine Arts, Nuremberg and directs the nomadic master's program a42.org. He is co-founder of the public seminar Akademie c/o. Christopher Roth's film “Baader” was awarded the Alfred Bauer prize. He undertook research with Georg Diez titled 80*81 and shows with Esther Schipper in Berlin. He was visiting professor at the Academy of Fine Arts, Nuremberg. Sam Chermayeff co-founded the office June 14 Meyer-Grohbrügge & Chermayeff in Berlin in 2001, after having worked for SANAA in Tokyo. He has taught at DIA Dessau and Columbia University.



DANIEL NIGGLI, MATHIAS MÜLLER, FABIAN HÖRMANN
EM2N
Zurich

Daniel Niggli and Mathias Müller were visiting professors at the Swiss Federal Institute of Technology in Lausanne as well as in Zurich. Their firm EM2N is currently working on projects worldwide. Mission statement: As post-idealistic children of the '68 generation, we do not recognise a single great truth, but find in the fractures of reality a ground in which to anchor architecture. This is the radicalism that we derived from Venturi's 'both-and' principle. But this should not be mistaken as being arbitrary or indecisive. Behind and within it lies the problematic recognition of equitable values, and a longing for an architecture that renounces all dogma, opening itself to the freedom of possibility. We aim to produce architecture that is powerful and personal, developing with the capability of achieving its own character.



EMANUEL CHRIST, CHRISTOPH GANTENBEIN
Christ & Gantenbein Basel

After graduating from the ETH Zurich in 1998, Emanuel Christ and Christoph Gantenbein (born in 1970 and 1971) set up their practice Christ & Gantenbein in Basel. Since 2010 both have been teaching as assistant professors at the ETH Zurich. Together with six associates and a team of 35 architects, Christ & Gantenbein work on a wide range of projects, from private commissions, renovation of historic buildings to housing, office buildings and bridges as well as large scale urban master plans. Recent projects include the renovation and extension of the Swiss National Museum in Zurich and the extension of the Kunstmuseum in Basel. Built projects are to be found in Switzerland, Germany, the United Kingdom and Mexico.



ROGER DIENER
Diener & Diener
Architekten
Basel

Established in Basel in 1942, the second generation of Diener & Diener has been active since 1980. The Basel office, along with its subsidiary in Berlin, has been headed by Roger Diener, since 2011, together with Terese Erngaard, Andreas Rüedi, and Michael Roth. Originally focussing on residential projects, the firm now also systematically develops urban-planning projects as well as projects for the renovation and extension of historic buildings. The basis of such designs is a perception of the European city in all its variety and continuity. Roger Diener is Professor of Architecture and Design at the Swiss Federal Institute of Technology in Zurich (ETHZ) and a Board member of the German Foundation for Monument Protection.



MARTIN REIN-CANO
Topotek 1
Berlin

Martin Rein-Cano was born in 1967 in Buenos Aires. He studied History of Art at Frankfurt University and Landscape Architecture at the Technical University in Hannover and Karlsruhe. He obtained his first professional experience in the office of Peter Walker and Martha Schwartz in San Francisco. The TOPOTEK 1 office was established in 1996. Martin Rein-Cano has taught as a visiting professor in Europe and North America. He gives lectures at various universities and other cultural institutions worldwide and is regularly involved as a jury member in national and international competitions.



JAN EDLER
realities:united
Berlin

Jan Edler, born in 1970 in Cologne, studied architecture at RWTH Aachen University and the Bartlett School of Architecture in London. From 2000 to 2001 he taught at the Department of Architecture at the Technical University of Berlin, and in 2003 at Pasadena Art Center College of Design. As part of the Berlin based art group “Kunst und Technik” (1997-2000) he started to work with his brother Tim. In 2000 the brothers founded realities:united as a studio for art and architecture. Since then the Edlers, alias realities:united, have established a unique reputation for their spectacular art and media extensions to buildings by some of the world's most prominent figures in contemporary architecture.



BOSTJAN VUGA
Sadar + Vuga
Ljubljana

Bostjan Vuga graduated from the Faculty of Architecture in Ljubljana in 1992 and continued post graduate studies at the AA School of Architecture in London from 1993 to 1995. In 1996, together with Jurij Sadar, he founded Sadar + Vuga in Ljubljana. He was studio tutor at the Berlage Institute in Rotterdam and visiting critic at the AA School of Architecture, at Bauhaus Kolleg in Dessau, at the IAAC in Barcelona, at the ETH Zurich and the Academy of Fine Arts Vienna. He is currently guest professor at Adip, TU Berlin. As a guest editor he took part in two issues of AB architectural bulletin. Bostjan Vuga has published numerous articles on current developments in architecture and urban planning.



MARKUS SCHAEFER
Hosoya Schaefer
Architects
Zurich

Markus Schaefer is a partner at Hosoya Schaefer Architects in Zürich founded with Hiromi Hosoya in 2003. The firm has a wide spectrum of activities from interiors and buildings to urban design and research, such as a 230 ha masterplan in Ljubljana, mobility research for Volkswagen or train stations in Toronto. In Switzerland, the office won first prizes for the Airport Engadin and the train station area St. Moritz. A regional strategic study “Metrobild” prepared for the Metropolitan region of Zürich resulted in a series of urban planning projects in the same perimeter. Prior to founding Hosoya Schaefer, Markus Schaefer was a director of AMO in Rotterdam, the think tank and research department of OMA.



ANDREAS SONDEREGGER, MISCHA SPOERRI, RAPHAEL FREI
pool Architekten
Zurich

pool architects arose out of a discussion forum assembling young practitioners in the field of urban planning. This “pool” has brought together eight partners, all of whom have made a name for themselves over the past decade with their undogmatic interdisciplinary work, who take part in debates about architecture, and currently teach as guest lecturers at the ETH Zurich. pool differs from other architectural offices in having a special organisational structure in which solutions are sought on a group basis. pool buildings are not distinguished by a formal style; rather, they are the result of a series of encounters with the uses and material requirements of a given project. The office has won numerous competitions with their projects.



ANGELUS EISINGER
Zurich/ Hamburg

Angelus Eisinger is an urban development and planning historian with a background in the social sciences and economics. He has been Professor for History and Culture of the Metropolis at the HCU in Hamburg since 2008. Between 2005 and 2008 he was Professor for Urban Development and Spatial Planning at the Hochschule Liechtenstein. In 2003 he completed his habilitation at the ETH Zurich. His research and teaching focus on the cultural aspects, as well as the impact of architecture, town and regional development. Additionally, he works as a consultant and evaluator of planning processes and participates in conceptual work for urban design competitions and planning studies.



MARTIN HELLER
Heller Enterprises
Zurich

Martin Heller, born in 1952, founded Heller Enterprises in 2003 and has since worked as an independent exhibition curator, author and cultural entrepreneur for several projects in Switzerland, Germany and Austria. He has served as director of the Museum of Design in Zurich (1986-1998), artistic director of the Swiss national exhibition Expo.02 (1999-2003) and artistic director of Linz 2009 European Capital of Culture (2005—2010). In 2010/2011 he was involved in the concept development of the International Building Exhibition (IBA) in 2020. Martin Heller is currently responsible for planning the content of the future Humboldt Forum in Berlin.



ANDREAS RUBY
textbild/ Ruby Press
Berlin

Andreas Ruby is an architectural theorist and curator. From 1999 to 2001 he was editor of the architecture magazine Daidalos. Since 2001, and with his partner Ilka Ruby, he has been leading textbild, an office for architectural communication. In 2008 they founded their own publishing house Ruby Press and launched their first title “Urban Transformation”. Andreas Ruby has taught at University Kassel, Cornell University Ithaca/NY, Ecole Polytechnique Fédérale Lausanne and the Metropolis Master Programme Barcelona. From 1999 to 2001 he was a member of the scientific committee of Archilab Orléans. He is member of the board of the German Architecture Museum, and member of the jury of the Hans-Schäfer-Award for Architecture.



KUNLÉ ADEYEMI
NLÉ
Lagos/ Amsterdam

NLÉ is led by Kunlé Adeyemi, an architect, designer and urbanist with a track record of conceiving and completing high profile, high quality projects internationally. Born and raised in Nigeria, Adeyemi studied architecture at the University of Lagos where he began his early practice, before joining OMA in 2002. He later studied at Princeton University and received a post-professional master's degree in architecture. At OMA, working closely with Rem Koolhaas, he led the design, development and execution of several projects in Europe, Asia, Africa and the Middle East, before founding NLÉ. NLÉ (“at home” in Yoruba) is an architecture, design and urbanism practice committed to the business and intelligence of developing cities.



DON MURPHY
VMX Architects
Amsterdam

Don Murphy, born in 1965, studied at Southbank University London and was one of the first graduates of the Berlage Institute. In 1995 he established VMX architects together with Leon Teunissen in Amsterdam. The projects of VMX range from the design of a table to the design of a temporary bicycle storage facility, and from the complete modification of an existing house to the design of large, complex public buildings, hospitals, offices and schools. Don Murphy has lectured at various universities. He has been a guest professor at TU Delft, unit professor at Academie van Bouwkunst in Tilburg, guest professor at the Berlage Institute in Rotterdam and is currently adjunct professor at Hanyang University in Shanghai.



ULRICH GÖRLICH, MERET WANDELER
ZHdK
Zurich

Since 2004 Ulrich Görlich and Meret Wandler, born in 1952 and 1967, have carried out research projects focusing on photography and spatial development at the Institute for Contemporary Art Research (IFCAR) of the ZHdK: “Fotografische Langzeitbeobachtung Schlieren 2005–2020” as well as “Archiv des Ortes. Sammelstrategien für ein fotografisches Archiv zur Raumentwicklung”. Ulrich Görlich has been professor of photography at Zurich University of the Arts (ZHdK) since 1991 and since 2008 has headed the study course Master of Fine Arts. Meret Wandler is currently a researcher at the IFCAR. From 1998 to 2005 she was an assistant and lecturer of photography at the ZHdK as well as lecturing at the School of Social Work Zurich University of Applied Sciences (ZHAW).



LUKAS SCHWEINGRUBER
Schweingruber Zulauf
Landschaftsarchitekten
Zurich

Lukas Schweingruber and Rainer Zulauf founded Schweingruber Zulauf landscape architects in 2005. For Schweingruber Zulauf, landscape architecture provides a field of experimentation in which the concepts of nature and landscape spaces can be studied. Schweingruber Zulauf work on city- and landscape spaces at various scales. Amongst many others, the completed projects of Schweingruber Zulauf landscape architects include the design of the open space of the Prime Tower in Zurich, the “Zellweger-Luwa Areal” in Uster, the “Stadtspark Uster” and the “Oerliker Park” in Zurich. Lukas Schweingruber taught at the University of Applied Sciences in Rapperswil (HSR) until 2008.



ALEXANDRE CHEMETOFF
Alexandre Chemetoff & Associés, Bureau des paysages
Paris

Alexandre Chemetoff, born in 1950 in Paris, is an architect, urban planner and landscaper. Alexandre Chemetoff regards his work as a commitment, and has chosen to practise his activity in a free and open way by refusing to acknowledge the limits and borders between the disciplines. He perceives the practice of his profession as a multi-disciplinary art and sees the contemporary world as the content for the projects he undertakes and the actions he carries out. The programme sets out the question, the site provides the resources, and the project a means of changing the rules of the game.



MARC ANGÉLL
agps
Zurich/ Los Angeles

Marc Angéll is professor at the Department of Architecture at the ETH Zurich. His research at the Network City and Landscape (NSL) and the Future Cities Laboratory (FCL) in Singapore addresses developments of large metropolitan regions. He is the author of several books, including “Building Brazil!”, “Deviations. Designing Architecture—A Manual”, “Indizien: On the Political Economy of Contemporary Urban Territories”, and “Cities of Change Addis Ababa” on urban transformation in developing countries. He taught at Harvard University and at the University of Southern California in Los Angeles. He runs his architectural practice agps with Sarah Graham, Manuel Scholl, Reto Pfenniger, and Hanspeter Oester, with offices in Los Angeles and Zurich.



ANDRÉ BIDEAU
Zurich

André Bideau is an architectural theorist, lecturer and writer in Zurich. He graduated with a degree in architecture from the ETH, and completed his doctorate at Zurich University. From 1997 to 2002 he was the editor of Werk, Bauen + Wohnen, in 2004 Research Fellow at the Internationales Forschungszentrum Kulturwissenschaften (IFK) in Vienna. In addition to his work as architecture critic for the Neue Zürcher Zeitung and lecturing posts in Europe and the USA, Bideau is working on a research project that examines the connections between architectural discourses since 1968 and the experience of post-modern urbanity. “Architektur und symbolisches Kapital. Bilderzählungen und Identitätsproduktion bei O.M. Ungers” was published in 2011 by Birkhäuser.



DAVID TROTTIN
Périphériques
Paris

David Trottin, born in 1965, is co-founder of Périphériques, a Paris-based office consisting of two agencies, Marin + Trottin Architects and Anne-Françoise Jumeau Architects. Since 1997, Périphériques has been a structure in constant evolution, exploring production and diffusion of architecture while proposing the negotiation and sharing of ideas between several partners as a platform for creation. Périphériques focuses on the fields of architecture and urbanism. The projects by Périphériques range from small scale buildings to cultural and programmatically large and complex buildings. David Trottin currently teaches at the Ecole Nationale Supérieure d'Architecture de Versailles.



ALFREDO BRILLEMBOURG, HUBERT KLUMPNER
Urban-Think Tank
Caracas / São Paulo / New York / Zurich

Since July 2010 Alfredo Brillembourg & Hubert Klumpner have held the Chair of Architecture and Urban Design at ETH Zurich. Since 2007 they have taught at Columbia University, where they founded S.L.U.M. Lab. Their research and work are geared towards the goal of transforming cities in the 21st century. They concentrate on establishing experimental and sustainable living models for global cities and global slums, and aim to create bridges between first world industry and third world informal urban areas. They were awarded the 2010 Ralph Erskine Award, the 2011 Gold Latin America Holcim Award, and the 2012 Silver Global Holcim Award. They have presented work at the MoMA (New York), and at the Venice, Rotterdam and São Paulo Biennales.



ROGER BOLTSHAUSER
Boltshauser Architekten
Zurich

Roger Boltshauser has headed the office of Boltshauser Architekten in Zurich since 1996. His projects (schools, apartment and administration buildings) are largely the outcome of competitions and study commissions and are characterised by powerful, block-like depositions with a high density in terms of space and materials. The office has also made a name for itself in rammed earth construction. The Rauch House in Schönlis, Austria, which was completed in collaboration with rammed earth pioneer Martin Rauch, is to date the most highly regarded example of this construction technique. In addition to running his office, Roger Boltshauser also taught at ETH Zurich and EPFL Lausanne from 1996 to 2010.



FRANK ZIERAU
Frank Zierau Architekt
Zurich

Frank Zierau founded his own office in Zurich in 1997, after working for Meili, Peter Architekten from 1991 to 1995. Since then he has completed numerous projects in a wide range of different scales. His portfolio includes urban studies as well as projects for public, cultural and private building types. Since 2011 he has been assistant professor at the Zurich University of Applied Sciences in Winterthur (ZHAW). Frank Zierau was a lecturer at the Institute for Architecture and Planning of the University of Liechtenstein, Vaduz. He worked as research assistant under professor Walter Nägeli at Karlsruhe Institute of Technology and as teaching assistant at the ETH Zurich under the professors Axel Fickert as well as Marcel Meili and Markus Peter.